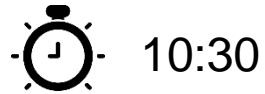


Welcome



10:30





Joint call for proposals for franco-german innovation projects on artificial intelligence technologies for risk prevention, crisis management and resilience

Meet & Apply
11 March 2021

Agenda

1. Welcome
2. Presentation of the joint call for proposals
 - **Antoine Roux**, Bpifrance
 - **Dr. Regine Gernert**, DLR Project Management Agency
3. Q&A
4. Pitches

Moderation: **Philipp Günther**, Project Manager Innovation AI, Berlin Partner
Support by: **Mona Meyer-zu Kniendorf**, Project Manager Innovation EEN, Berlin Partner
Friedemann Lotz, Key Account Manager ICT, Berlin Partner

How Berlin Partner can support you



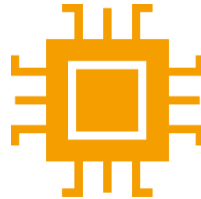
BUSINESS TALENT PACKAGE

Business Immigration
Service (Visa),
Recruitment



BUSINESS FINANCING PACKAGE

Public funding
schemes



BUSINESS INNOVATION PACKAGE

Innovation funding,
Technology transfer



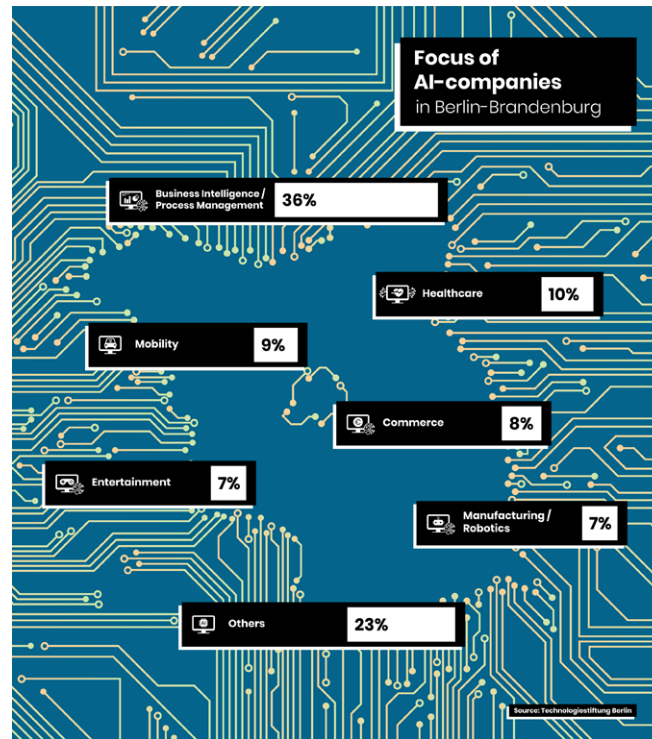
BUSINESS INTERNATIONAL PACKAGE

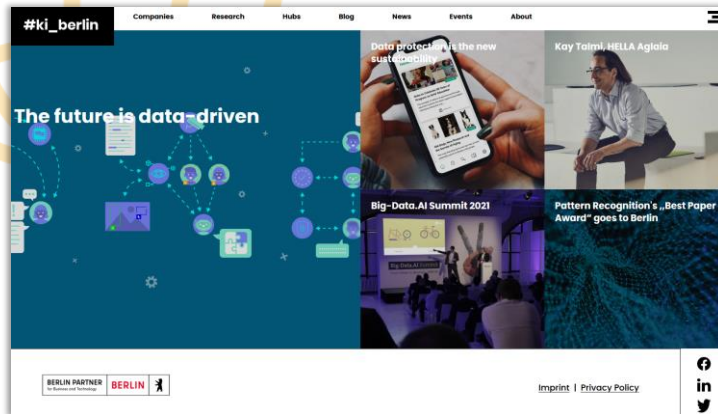
EU funding, trade
show services, Start
Alliance



BUSINESS LOCATION PACKAGE

Location search





ki-berlin.de

AI MONDAY

MARCH 22

WHERE:
ONLINE

HOW TO DRIVE AI INNOVATION?

#AIMonday
ai-monday.de/berlin



ai-monday.de/berlin



JOINT CALL FOR PROPOSALS FOR FRANCO- GERMAN INNOVATION PROJECTS ON ARTIFICIAL INTELLIGENCE TECHNOLOGIES FOR RISK PREVENTION, CRISIS MANAGEMENT AND RESILIENCE



Fields of application



Health issues



Major health issues include early detection of epidemics, care of the population and crisis management.

Economic issues



AI applied to the economy should enable economic sovereignty, improve economic impact assessment and help to secure value chains and logistics.

Sustainability issues



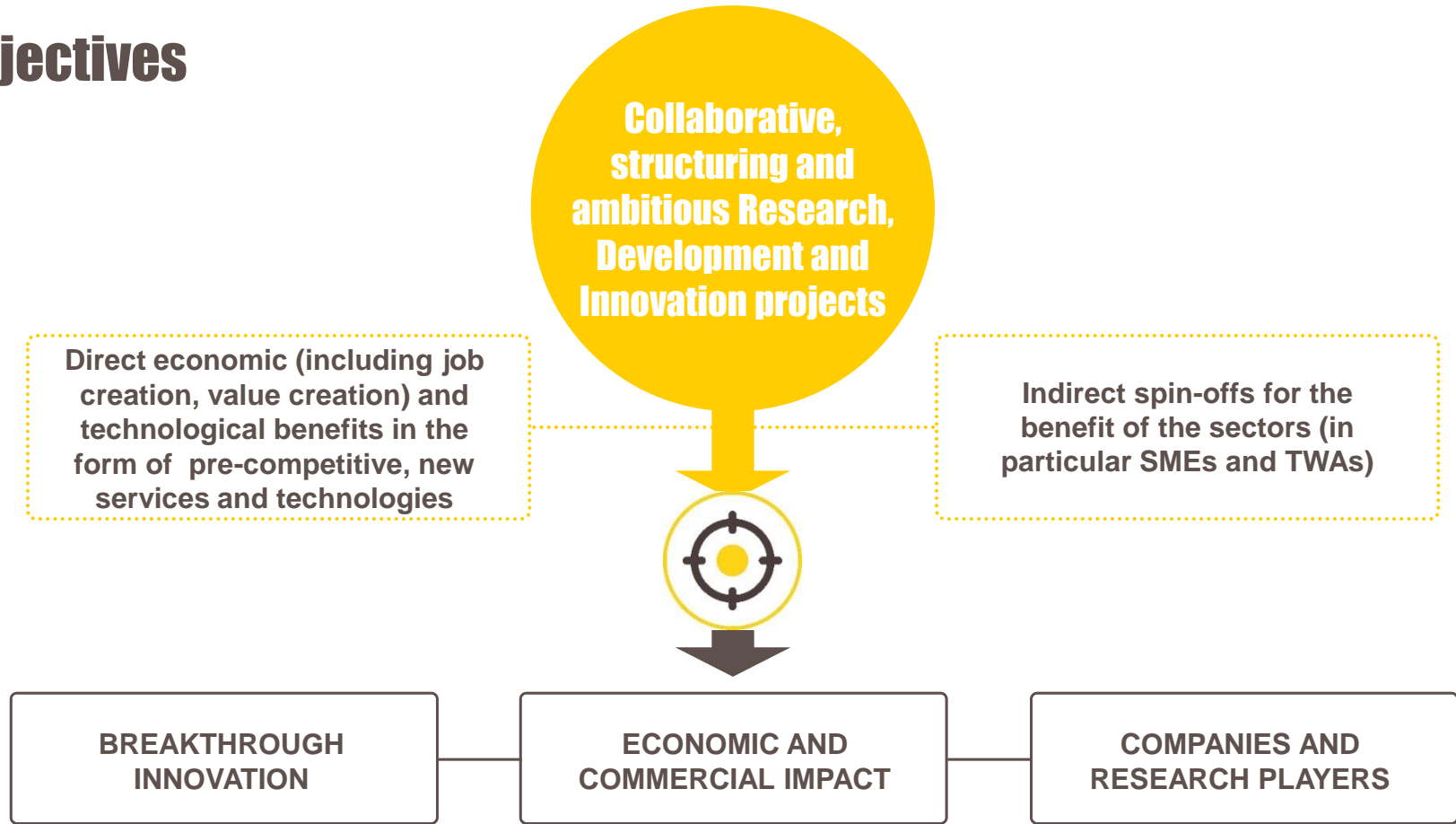
Fighting against climate change, protecting biodiversity, using fewer resources and producing less waste are measures that contribute to crisis prevention, but also to a society more resilient to future crises and to a more competitive economy.

Transversal issues



The projects can integrate or have a major focus on transversal issues related to the development of AI solutions such as data or infrastructures. Specific transversal AI research is also possible. Nevertheless, an AI use case in the field of risk prevention, crisis management and resilience should be.

Objectives



COLLABORATIVE PROJECT

- AT LEAST ONE ELIGIBLE PARTNER FROM EACH OF THE TWO COUNTRIES, FRANCE AND GERMANY.
- ONE PARTNER OF EACH COUNTRY HAS TO BE DEFINED AS LEADING PRINCIPAL INVESTIGATOR (LPI)

PROJECT SIZE

Minimum of €4M

DURATION OF PROJECT

3 YEARS

CAPACITY OF THE CONSORTIUM TO CARRY THE PROJECT

Operational and financial capacity
Skills of partners and teams

**STRATEGIC NATURE AT
BiNATIONAL and NATIONAL LEVEL**

INNOVATIVE CHARACTER AND ADDED VALUE OF THE PROJECT

Commitment by project leaders to give priority to the French, German and European markets for their products.

ECO-CONDITIONNALITY

ECONOMIC IMPACT OF THE PROJECT

Quality and robustness of the business model,
potential market
Economic Benefits and Jobs

**STRUCTURED COLLABORATION AND DIFFUSING
EFFECT WITHIN A SECTOR**

We are looking for partners / We want to be partners

Create an account.



Fill in the form: our concern - our profile - contact.



Search.

<https://partnering.pt-dlr.de/AIRES>

SCHEDULE



- 1) Deadline for submission of project proposals: **29 April 2021 at 12pm**
- 2) Hearing of projects: **14 – 18 June 2021**
- 3) Notifications to applicants: **from 23 July 2021**
- 4) Full project proposal application received: **by 22 October 2021**
- 5) Approval: **November 2021 – February 2022**
- 6) Project Duration : **from March 2022 by February 2025**

SUBMISSION

The project description must be submitted by each Leading Principal Investigator (LPI) to the following extranet websites:



France: <https://extranet.bpifrance.fr/projets-innovants-collaboratifs/>



Germany: <https://ptoutline.eu/app/aires>



The project description should be no longer than 20 pages, plus an annex presenting the partners



The project description must be submitted identically to both national funding agencies.



This description is the first stage of a two-stage competition

SUBMISSION



Specific national eligibility criteria of FRANCE

- The full catalogue can be accessed at <https://www.bpifrance.fr/Quisommes-nous/Nos-partenaires/Poles-de-competitivite/Poles-de-competitivite/Presentation-AAP-PSPC>



Specific national eligibility criteria of GERMANY

- The full catalogue can be accessed at <https://www.digitale-technologien.de/DT/Navigation/DE/Foerderung/Foerderung/Foerderung/foerderrahmen.html>):

CONTACTS



DLR Projektträger

Regine GERNERT
regine.gernert@dlr.de
+49 30 67 05 57 64



Antoine ROUX
antoine.roux@bpifrance.fr
+337 85 81 02 29

Link to the call on the websites:

[Appels à projets en cours | entreprises.gouv.fr](https://www.entreprises.gouv.fr)

https://www.digitale-technologies.de/DT/Navigation/DE/Foerderaufrufe/InternationaleKooperationen/intern_kooperationen.html



DLR Projektträger

bpifrance | 16

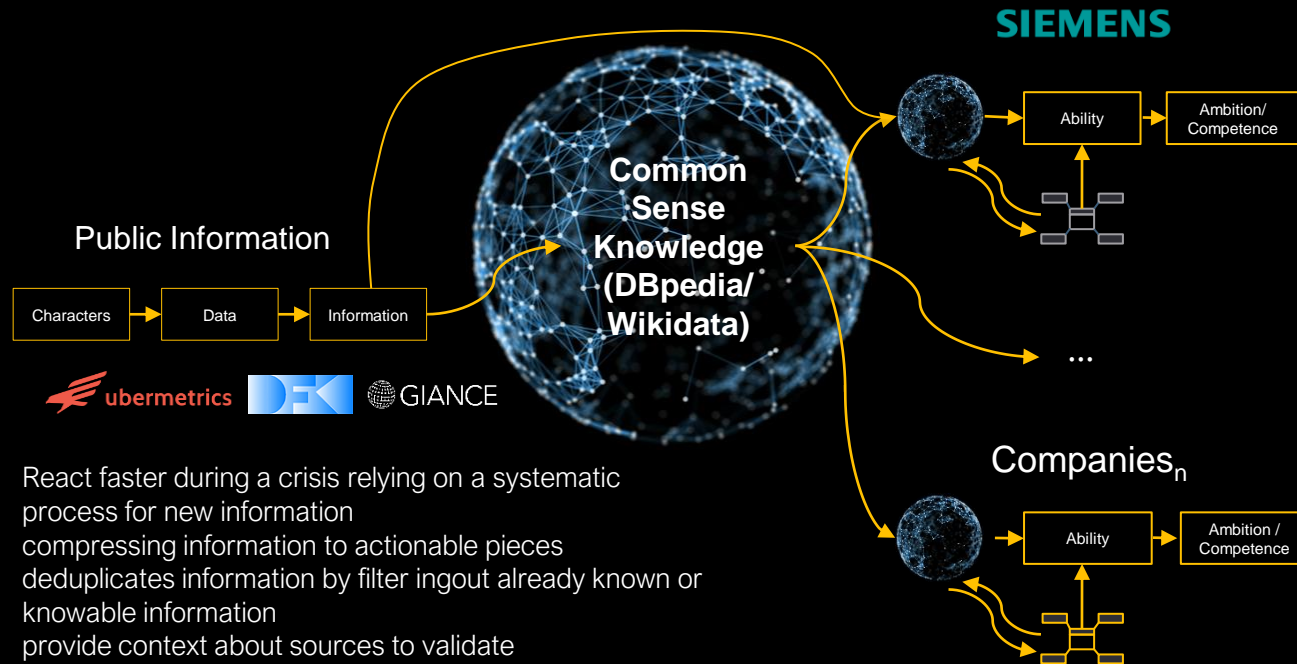


Questions

Pitches



How can we extract structured knowledge from public information?



How can we improve the resilience of our industries?

What we can bring to the partnership

- Extensive experience in Supply Chain Risk Monitoring for early signal detection with BMW, DFKI, Giance, DBpedia & Siemens ([PLASS](#))
- Experience on developing curation technologies for knowledge workers with partners like Wikimedia and Ada Health ([Qurator](#))
- A multi-lingual analyst team of around [450 experts](#) providing media intelligence services serving 20 DAX companies

What we are looking for in Partners

- Partners working on Risk and Supply Chain issues for European manufacturing and technology companies
- Partners with operating experiences of resilience issues in their core value streams identified during the corona crisis
- Experiences in redesigning decision making processes
- Multilingual Language Technologies
- Knowledge Technologies
- Experience in Human Interfaces for Knowledge Graphs

Thank you

Patrick Bunk
Founder & CEO

Ubermetrics Technologies GmbH
patrick@ubermetrics.com

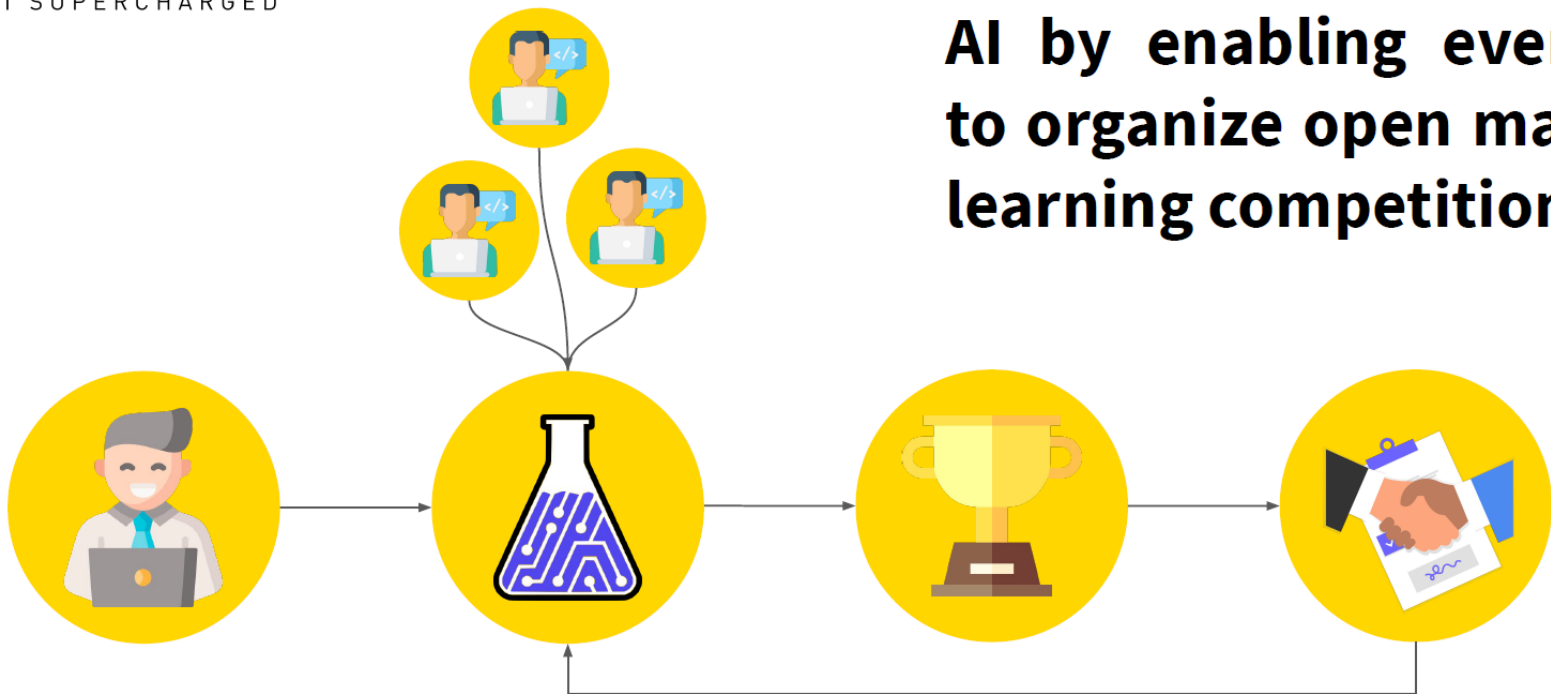




telesto.ai

AI SUPERCHARGED

We democratize access to AI by enabling everyone to organize open machine learning competitions.



Organizers
post the problem

Talented developers
make solutions

We select the best
solutions

We deliver the algorithm
to the organizer and
reward the developers



Who we are

We are **telesto.ai**, a young startup based in Heidelberg, with a drive to democratize AI and lower the barrier of entry.

With our platform, we enable everyone to organize machine learning competitions. From classroom applications to large scale hackathons, our platform can handle all.

What we are looking for

We are looking for partners in

- Higher education
- Healthcare
- Biotechnology
- Sustainable technologies
- Finance

to work together in organizing open machine learning challenges.

Contact



Tivadar Danka, PhD
CEO

✉ tivadar@telesto.ai



Dr. Anetta Leticia Vajda, LL.M, CPA
COO

✉ anetta.vajda@telesto.ai

Consultant - Project Manager

What I can offer

I offer advice and management services for **computer science & Virtual / Augmented Reality** projects in various market segments in **Europe**.

I worked amongst others for the **logistics, telecom, energy, aeronautic, automotive, retail, software edition & training** industries.

I facilitate the **complete project life cycle** for companies, from **business understanding** to **data preparation, planning** and **development, communicating the results** and **integration** within the organization (deployment).

I use **Agile, ITIL** and **PMI** methodologies.


I've experienced and/or have knowledge in:

IT infrastructure, Support services, Incident services, User experience, Research & Design, User Interface, Artificial Intelligence, Computer Vision Object/face recognition, Robotics, Internet of Things, Virtual / Augmented Reality

What I'm looking for

Opportunities to assist companies in realizing AI projects in the Industrial or Healthcare sector

Contact

Stephanie Fernier - Anka (France) 

sfernier@gmail.com



Questions



Σ eureka Clusters AI Call 2021
OPEN NOW!
Submission deadline: 28 June 2021

eureka-clusters-ai.eu

The aim of this Call is to **boost the productivity and competitiveness** of European industries through the adoption and use of **AI systems and services**.



Large enterprises, SMEs, Research & Technology Organisations (RTOs) and Academia from thirteen countries (Germany and others, but not France)



(in Germany): SME 50%, large enterprises 40%, research centers 90%, universities 100%



28 June 2021



virtual-mission-artificial-intelligence-germany.b2match.io

Dutch-German AI Expert Day on AI on 24 March

- information session on R&D funding opportunities
- opening statements from politics, science and business
- matchmaking



Philipp Günther

Project Manager Innovation AI

philipp.guenther@berlin-partner.de

+49 30 46302-207



Mona Meyer zu Kniendorf

Project Manager Innovation EEN

mona.meyerzukniendorf@berlin-partner.de

+49 30 46302-532



Friedemann Lotz

Key Account Manager ICT

friedemann.lotz@berlin-partner.de

+49 30 46302-535